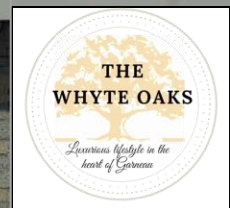


THE WHYTE OAKS

Luxurious lifestyle in the heart of Garneau



7912 - 109 St



780-777-7612

www.thewhyteoaks.com



LEVEL 4



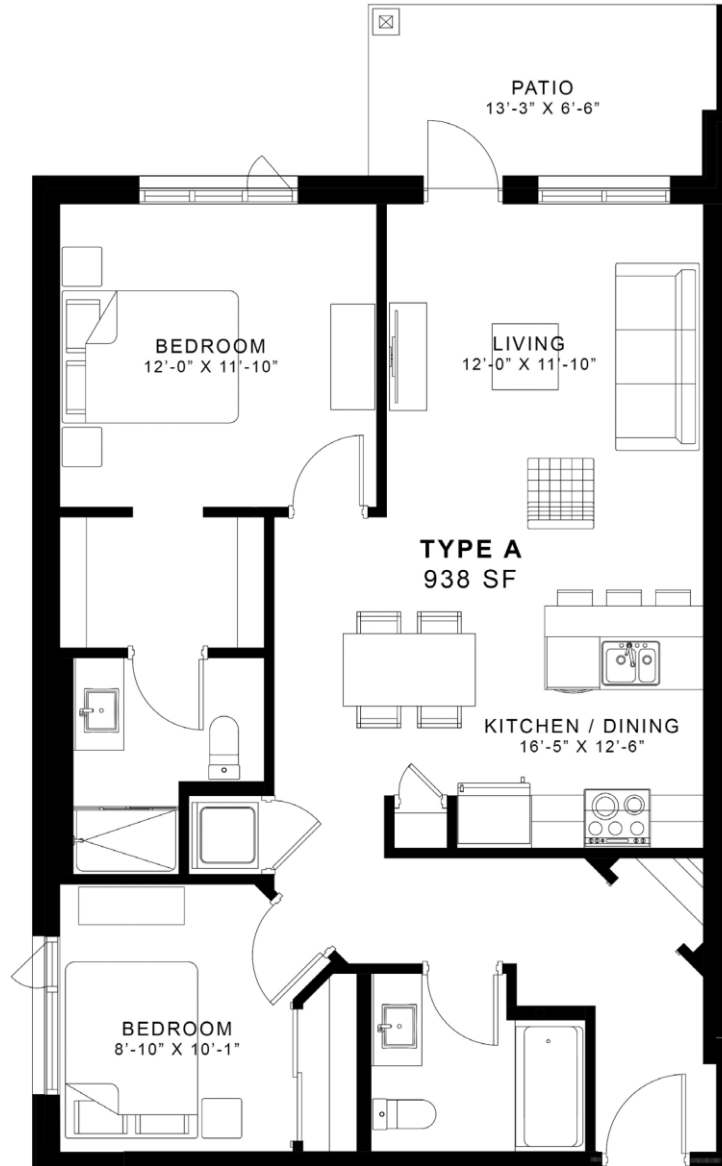
LEVEL 3



LEVEL 2



LEVEL 1



TYPE A

2 BEDROOM

Living Room	- 12'-0" x 11'-10"
Kitchen / Dining	- 16'-5" x 12'-6"
Bedroom	- 12'-0" x 11'-10"
Bedroom	- 8'-10" x 10'-1"

Internal Area	- 938 SF
Patio Area	- 86 SF

Total Unit Area - 1024 SF

Disclaimer:

The plans shown on the brochure are conceptual in nature. The developer reserves the right to make any amendments as deemed necessary. Rental Units will only be granted to people with good renting references.





LEVEL 4



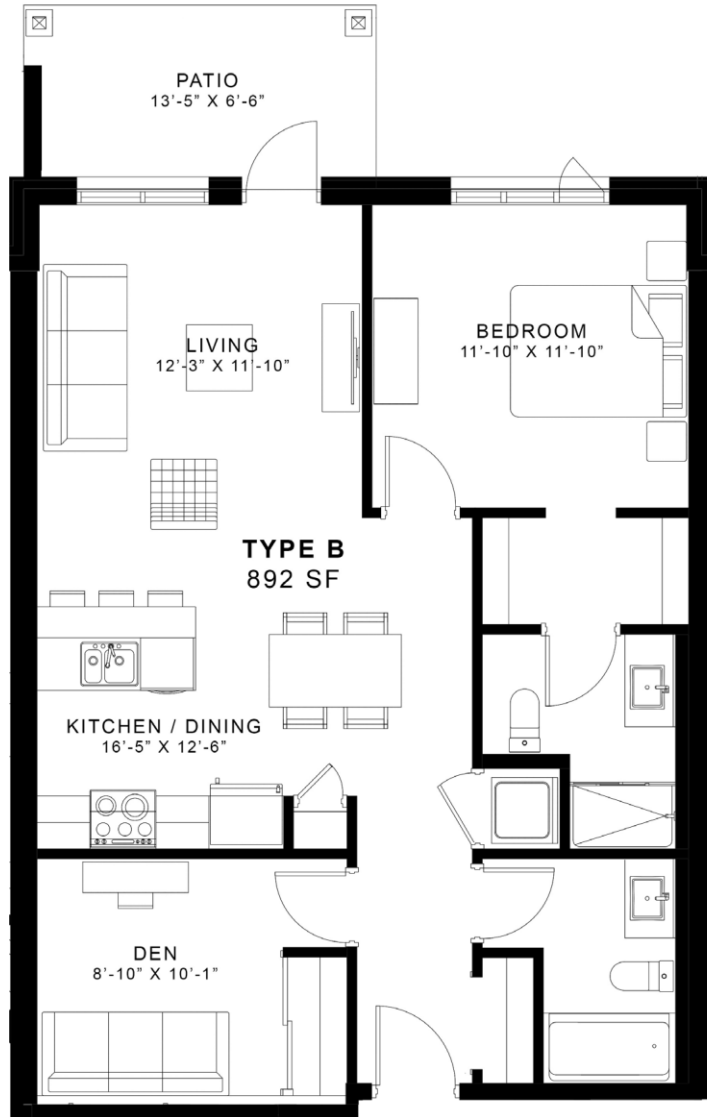
LEVEL 3



LEVEL 2



LEVEL 1



TYPE B

1 BEDROOM + DEN

Living Room	- 12'-3" x 11'-10"
Kitchen / Dining	- 16'-6" x 12'-6"
Bedroom	- 11'-10" x 11'-10"
Den	- 9'-4" x 10'-1"

Internal Area	- 892SF
Patio Area	- 84 SF

Total Unit Area - 982 SF

Disclaimer:

The plans shown on the brochure are conceptual in nature. The developer reserves the right to make any amendments as deemed necessary. Rental Units will only be granted to people with good renting references.

www.thewhyteoaks.com





LEVEL 4



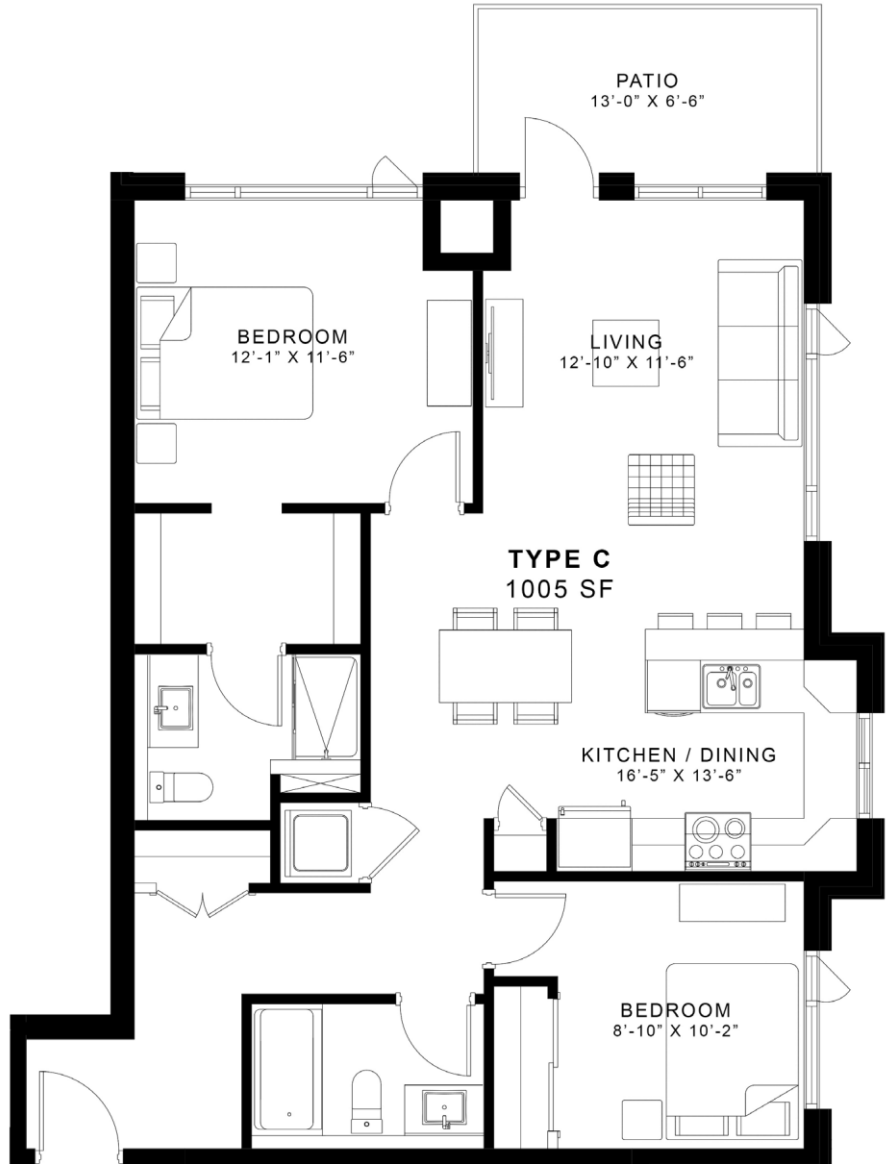
LEVEL 3



LEVEL 2



LEVEL 1



TYPE C

2 BEDROOM

Living Room - 12'-10" x 11'-6"
 Kitchen/Dining - 16'-5" x 13'-6"
 Bedroom - 12'-1" x 11'-6"
 Bedroom - 8'-10" x 10'-2"

Internal Area - 1005 SF
 Patio Area - 85 SF

Total Unit Area - 1090 SF

Disclaimer:

The plans shown on the brochure are conceptual in nature. The developer reserves the right to make any amendments as deemed necessary. Rental Units will only be granted to people with good renting references.

www.thewhyteoaks.com





LEVEL 4



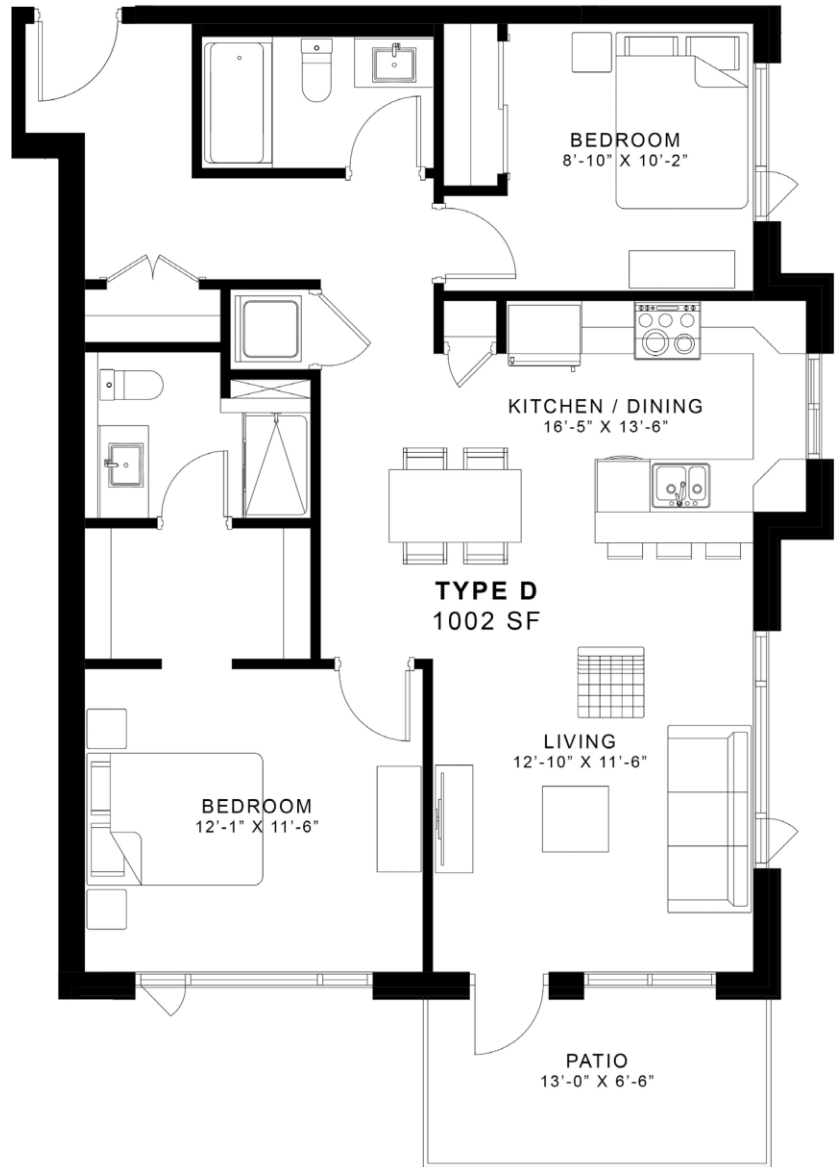
LEVEL 3



LEVEL 2



LEVEL 1



TYPE D

2 BEDROOM

- Living Room - 12'-10" x 11'-6"
- Kitchen / Dining - 16'-5" x 13'-6"
- Bedroom - 12'-1" x 11'-6"
- Bedroom - 8'-10" x 10'-2"

- Internal Area - 1002 SF
- Patio Area - 84 SF

- Total Unit Area - 1086 SF

Disclaimer:

The plans shown on the brochure are conceptual in nature. The developer reserves the right to make any amendments as deemed necessary. Rental Units will only be granted to people with good renting references.

www.thewhyteaks.com





LEVEL 4



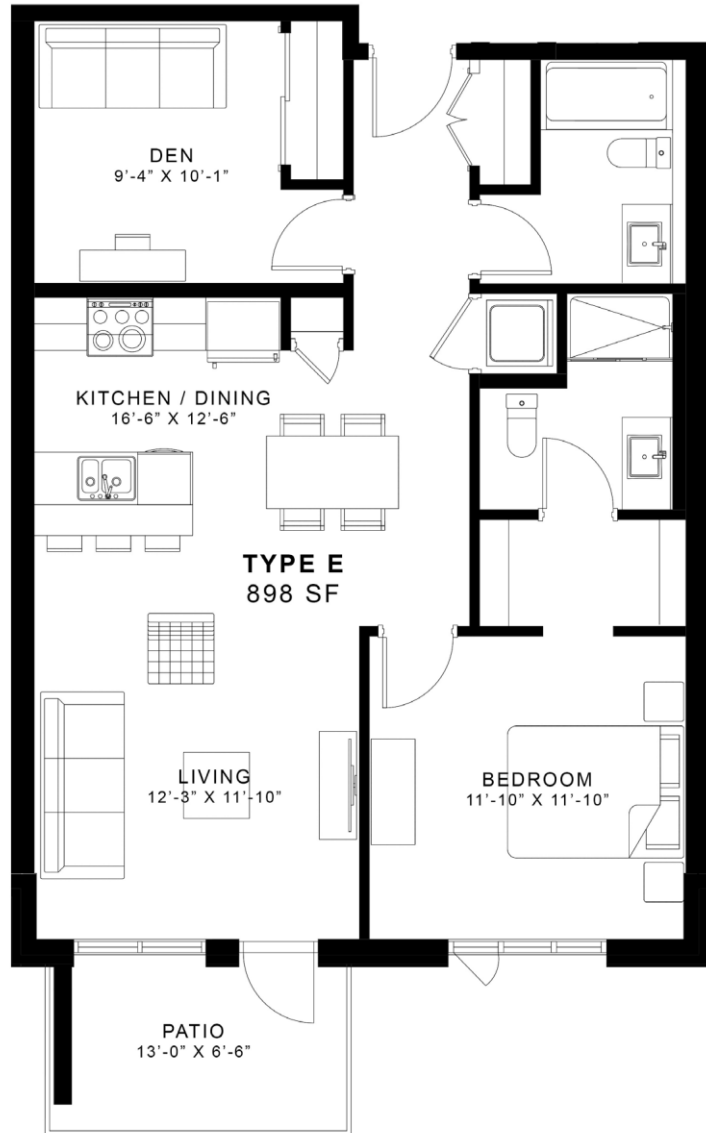
LEVEL 3



LEVEL 2



LEVEL 1



TYPE E 1 BEDROOM + DEN

Living Room	- 12'-3" x 11'-10"
Kitchen / Dining	- 16'-6" x 12'-6"
Bedroom	- 11'-10" x 11'-10"
Den	- 9'-4" x 10'-1"

Internal Area	- 898
SF Patio Area	- 84
SF	

Total Unit Area - 982 SF

Disclaimer:

The plans shown on the brochure are conceptual in nature. The developer reserves the right to make any amendments as deemed necessary. Rental Units will only be granted to people with good renting references

www.thewhyteoaks.com





LEVEL 4



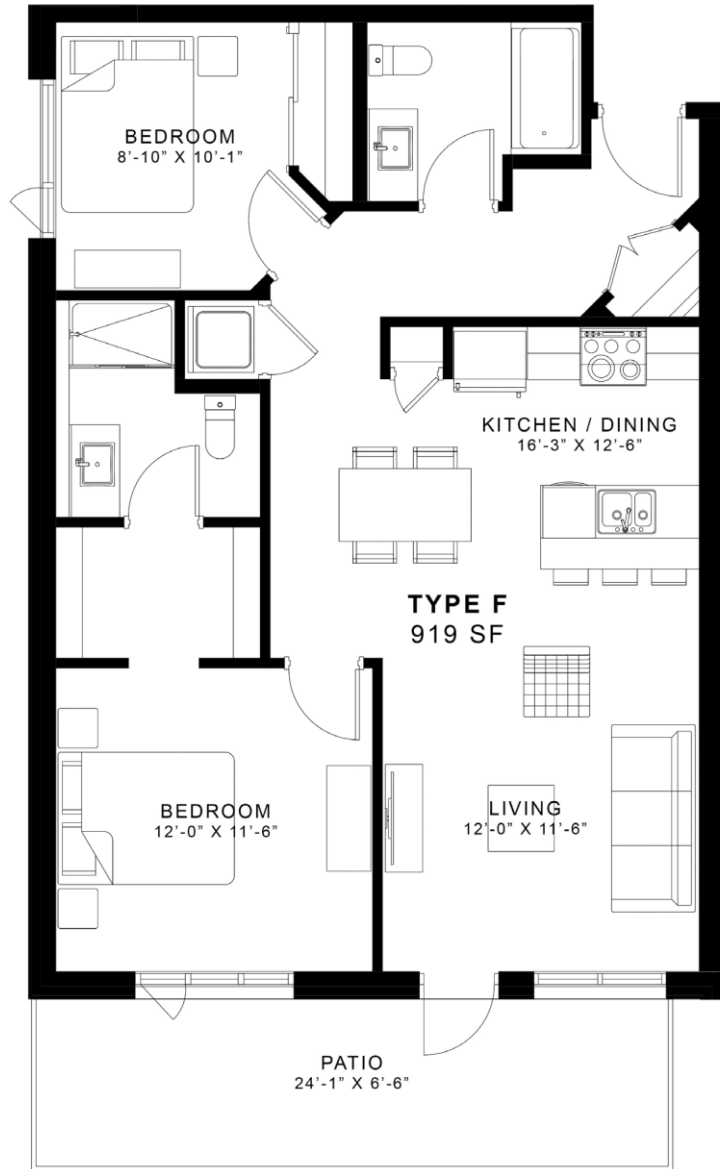
LEVEL 3



LEVEL 2



LEVEL 1



TYPE F

2 BEDROOM

Living Room	- 12'-0" x 11'-6"
Kitchen / Dining	- 16'-3" x 12'-6"
Bedroom	- 12'-0" x 11'-6"
Den	- 8'-10" x 10'-1"

Internal Area	- 919 SF
Patio Area	- 156 SF

Total Unit Area - 1075 SF

Disclaimer:

The plans shown on the brochure are conceptual in nature. The developer reserves the right to make any amendments as deemed necessary. Rental Units will only be granted to people with good renting references.





LEVEL 4



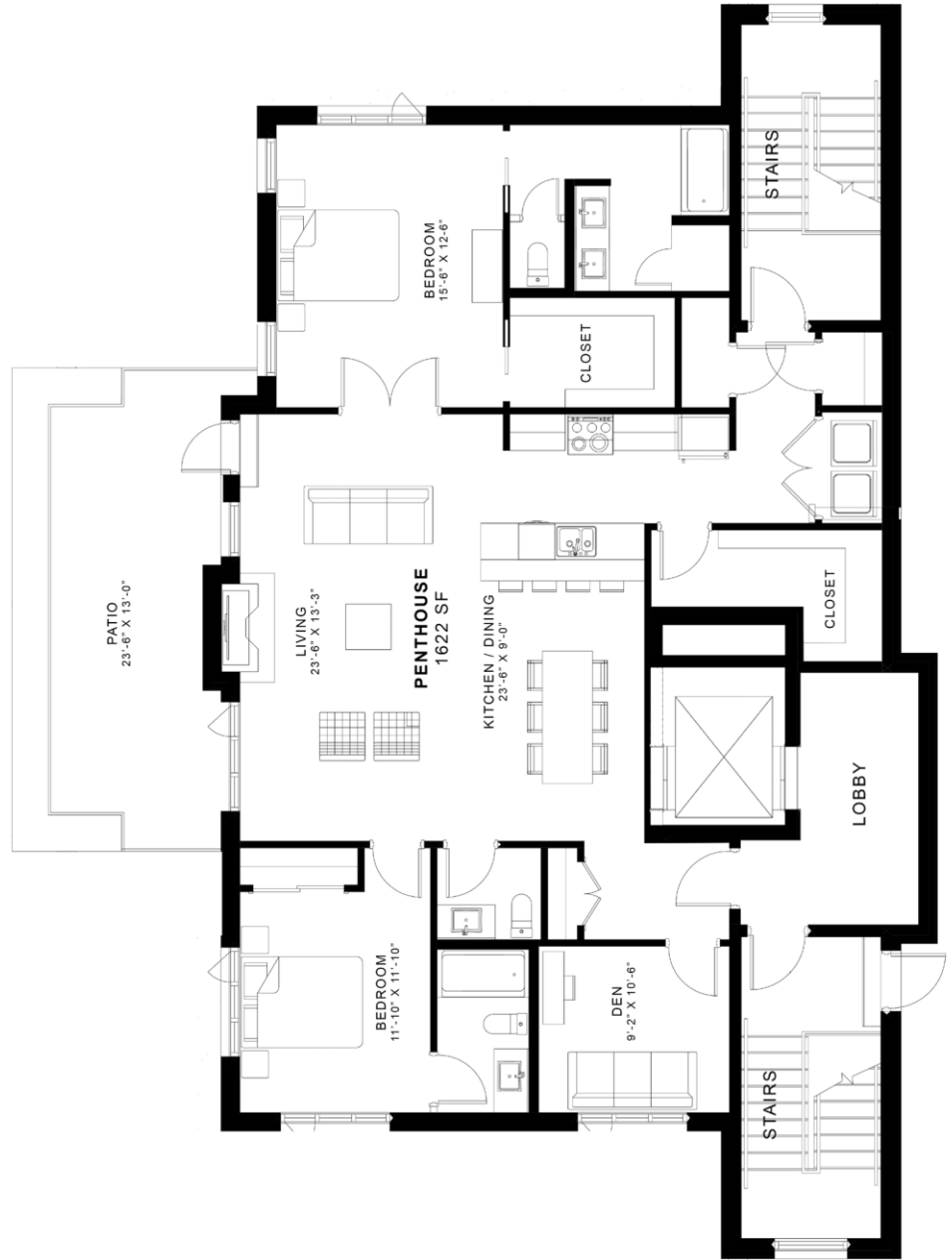
LEVEL 3



LEVEL 2



LEVEL 1



PH

2 BEDROOM + DEN

- Living Room - 23'-6" x 13'-3"
- Kitchen / Dining- 23'-6" x 9'-0"
- Bedroom - 15'-6" x 12'-6"
- Bedroom - 11'-10" x 11'-10"
- Den - 9'-2" x 10'-6"

- Internal Area - 1622 SF
- Patio Area - 305 SF

Total Unit Area - 1927 SF

Disclaimer:

The plans shown on the brochure are conceptual in nature. The developer reserves the right to make any amendments as deemed necessary. Rental Units will only be granted to people with good renting references. www.thewhyteaks.com





LEVEL 4



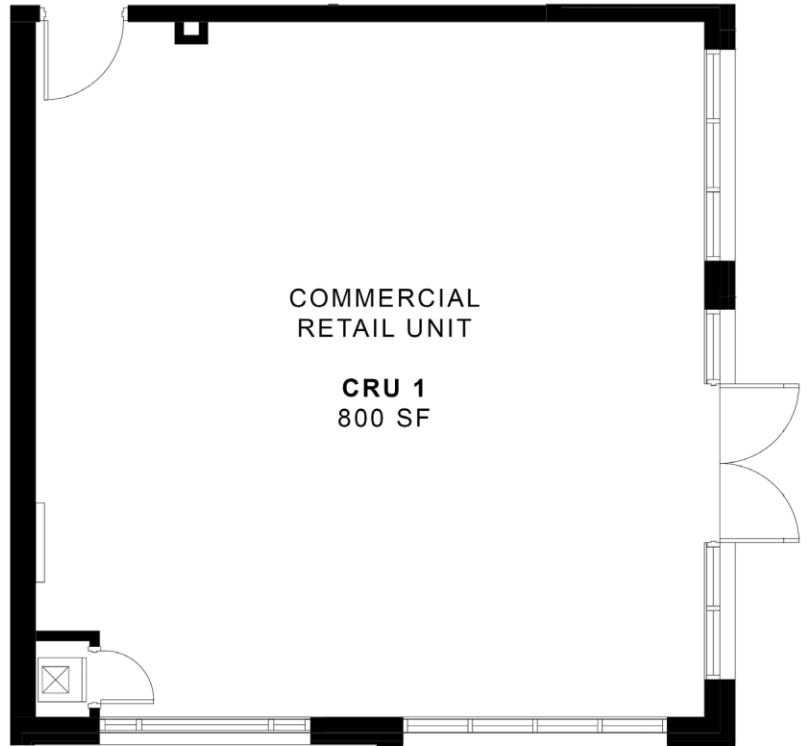
LEVEL 3



LEVEL 2



LEVEL 1



CRU 1

RETAIL

Total Unit Area - 800 SF

Disclaimer:

The plans shown on the brochure are conceptual in nature. The developer reserves the right to make any amendments as deemed necessary. Rental Units will only be granted to people with good renting references.





LEVEL 4



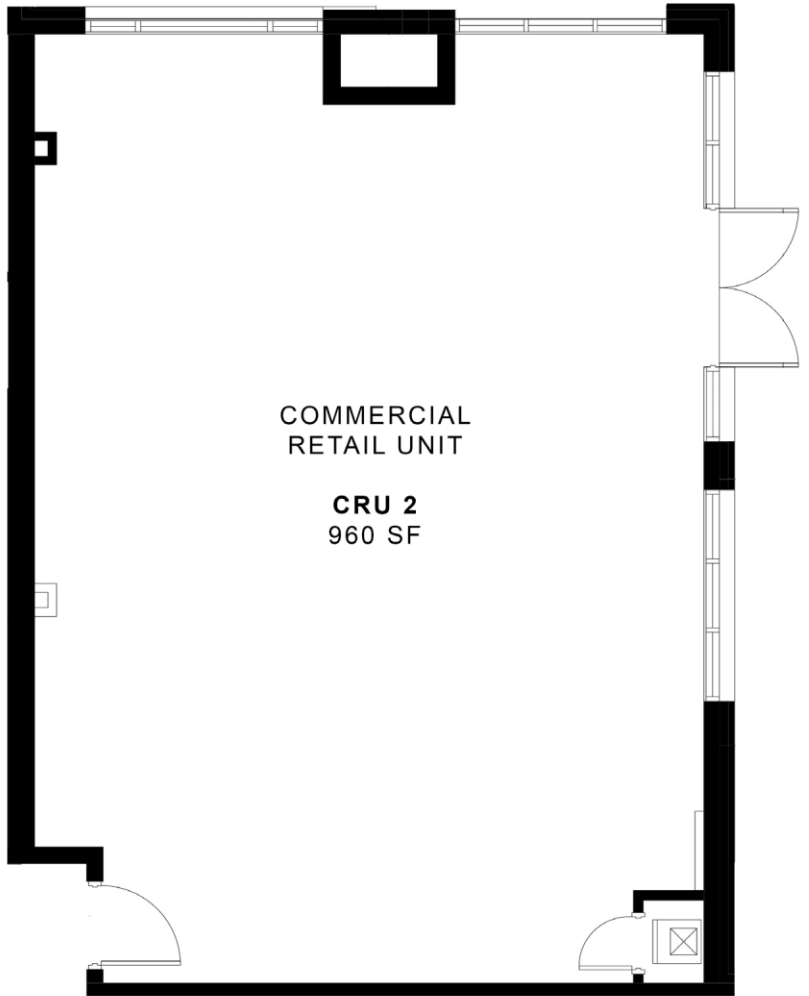
LEVEL 3



LEVEL 2



LEVEL 1



COMMERCIAL
RETAIL UNIT

CRU 2
960 SF

CRU 2

RETAIL

Total Unit Area - 960 SF

Disclaimer:

The plans shown on the brochure are conceptual in nature. The developer reserves the right to make any amendments as deemed necessary. Rental Units will only be granted to people with good renting references. www.thewhyteoaks.com

